



CTERA C400 / C800 Cloud Attached Storage® Appliances

All-in-One Cloud Storage Gateways with Integrated Data Protection and Network Attached Storage

- Integrated On-Site & Off-Site Data Backup and Disaster Recovery
- Robust Enterprise-Grade NAS Features
- Cloud File Sharing and Synchronization



Hybrid Storage Appliances with Integrated Cloud Services for SMBs and Branch Offices

The C400 and C800 appliances from CTERA Networks combine network attached storage (NAS) functionality with comprehensive data protection, providing fast local backup & recovery integrated with cloud storage for disaster recovery, remote access and file sharing.

With the included CTERA backup software, managed agents, remote management capabilities and end-to-end data protection, the C400 and C800 provide a highly cost-effective, easy-to-manage alternative to more expensive, disparate solutions.

Hybrid Cloud & On-Premises

Lightning-fast on-site backup and restore, with integrated, globally de-duplicated, efficient cloud backup that provides an off-site copy for disaster recovery.

Complete Data Protection

Protect the business against data loss and minimize disaster recovery time using a single solution – including roaming laptops, remote users, servers and workstations.

Robust Network Storage

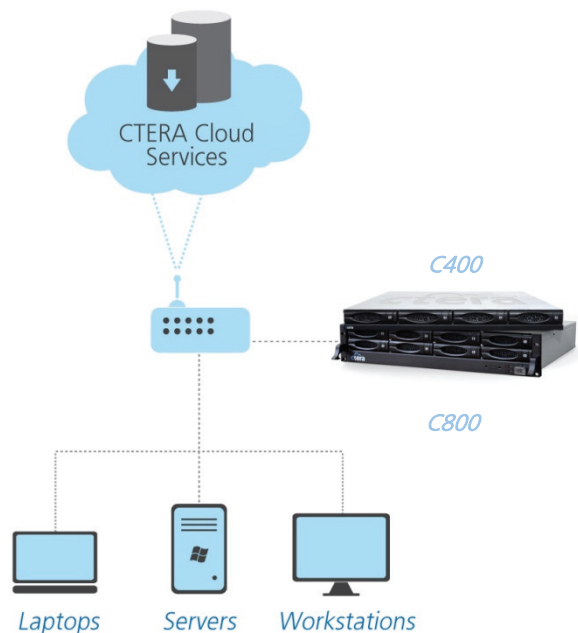
Full-fledged NAS appliances supporting RAID 5/6 for redundancy, inline volume encryption, thin-provisioned snapshots, iSCSI and Active Directory integration.

Central Management

Using the CTERA Portal, service providers and enterprise IT can manage and monitor any number of CTERA appliances from a unified Web console.

File-Based Collaboration

Access local and cloud-stored files from anywhere, on locally or over the Web. Share files with project groups and occasional users with email invitations. Synchronize files to and from the cloud between multiple users.



Install the C400 or C800 on your local network for hybrid local / cloud file sharing, sync, backup & recovery



CTERA's easy-to-use, browser-based user interface



About CTERA Networks

CTERA™ Networks revolutionizes data protection and storage for SMBs and enterprise branch offices with Cloud Attached Storage®, a solution that combines cloud storage services with on-premises appliances in an all-in-one solution for backup and recovery, shared storage and file-based collaboration.

CTERA was the first company to introduce cloud storage gateway appliances, and its scalable cloud service delivery platform enables service providers and IT resellers to easily deliver managed cloud storage services to their customers, using the public or private cloud backend of their choice.

For more information, visit www.ctera.com.

©2012 CTERA Networks Ltd. All rights reserved. CTERA Networks, the CTERA logo, CTERA Portal, Next3, Cloud Attached Storage, CTERA C400 and CTERA C800 are trademarks or registered trademarks of CTERA Networks Ltd. All other trademarks belong to their respective owners.

Appliance Features

- Clientless backup of local desktops and file servers
- Roaming laptop backup with CTERA Workstation Agent
- Application-aware server backup with CTERA Server Agent (optional add-on)
- RAID 0/1/5/6 and JBOD
- NTFS/FAT32/Ext3/Next3 file systems
- UPnP and Bonjour discovery
- Windows file sharing (CIFS), Apple file sharing (AFP), NFS, Time Machine, rsync, WebDAV
- iSCSI target
- FTP server
- Resizable logical volumes
- Thin-provisioned multiple snapshots with Next3
- AES-256 volume encryption
- Microsoft Active Directory support
- Role-based user management
- User disk quotas
- S.M.A.R.T HDD monitoring
- Secure remote management and real-time monitoring
- Custom email alerts and reports
- Full-text search
- Web-based UI requires MS Internet Explorer 7, Firefox 3, Chrome 5 or newer

Cloud Features

- Optimized incremental cloud backup with data compression
- Block-level global de-duplication
- Previous file versions with nested snapshot retention
- Automated scheduled backup
- Folder and attribute-based backup sets
- Restore methods: Windows Previous Versions, Virtual cloud drive, local appliance Web interface, and via CTERA Portal
- Read/write cloud file manager
- Synchronization of file between cloud folder and multiple users
- Offline seeding option for assisted initial backup
- Secure Web-based direct access to backups from anywhere
- Project-based and time-limited invitation-based cloud file sharing
- 256-bit AES encryption of all backups, with SHA-1 fingerprinting and user-specific secret passphrase
- Data transfer over 128-bit SSL

CTERA Agent Features

- Roaming laptop backup
- Disk-level "bare metal" backup, recovery to similar hardware or VM
- Optional CTERA Server Agent for Microsoft Exchange, SQL Server, Active Directory
- Locked/open files backup
- 50 Workstation Agents included
- Agents centrally managed from the appliance Web interface
- Workstation Agent requires Windows 7, Vista or XP
- Server Agent requires Windows 2003 SP1, 2008 or 2008 R2 Server, Linux (various distributions)

Hardware Specifications

| | C400 | C800 |
|-----------------------------|--|-----------------------------------|
| 3.5" SATA HDDs (Hot Swap) | 4 | 8 |
| Storage capacity (raw/RAID) | 12TB / 9TB (R5) | 24TB / 18TB (R6) |
| USB 2.0 ports | 2 | 2 |
| Gigabit Ethernet Ports | 2 | 2 |
| Power Supply | Single | Dual |
| Max. Power Consumption | 220W | 256W |
| Weight (exc. hard drives) | 7.8Kg | 13.2Kg |
| Dimensions (H x W x D), mm | 44 x 446.4 x 506 1U rack-mount | 88 x 446.4 x 506 2U rack-mount |
| Operating environment | 10°~40°C, 10%~85% humidity non-condensed | |
| Compliance | FCC, CE, RoHS, WEEE | |